



AFC FIELD REPORT: MC-Lite Cable®



ELECTRICAL SAVES 40% IN LABOR COSTS WITH AFC'S MC-LITE® CABLE, ALUMINUM CONDUCTORS IN RENOVATION PROJECT

A 40 percent reduction in the electrical contractor's labor cost was the most important benefit of substituting AFC MC-Lite® flexible metal-clad cable for rigid conduit with conductors in the renovation of the Chase-Park Plaza complex in St. Louis. The saving was identified by Charlie Pavelec, vice president of operation, Bell Electrical Contractors, Inc.

Chase-Park Plaza was known as the place to be during the 1940's and '50's in the city's Central West End, according to the *St. Louis Post-*

Dispatch newspaper. The complex originally consisted of two adjoining buildings, - the Chase Hotel, constructed in 1922 and designed by Preston J. Bradshaw, and the Park Plaza, and Art Deco structure designed by Sam Koplak in 1929. In

“Installing rigid conduit would have taken too long and cost too much.”

1961, the buildings were united into one complex, called The Chase-Park Plaza Hotel. The Renaissance-style

hotel was visited by presidents, movie stars, and area notables through the 1970's. In the early 1980's a combination of a decline in the city's Central West End and construction of modern hotels resulted in a loss of business and the Chase-Park Plaza closed. These two buildings were converted to apartments in 1988, but closed again one year later.

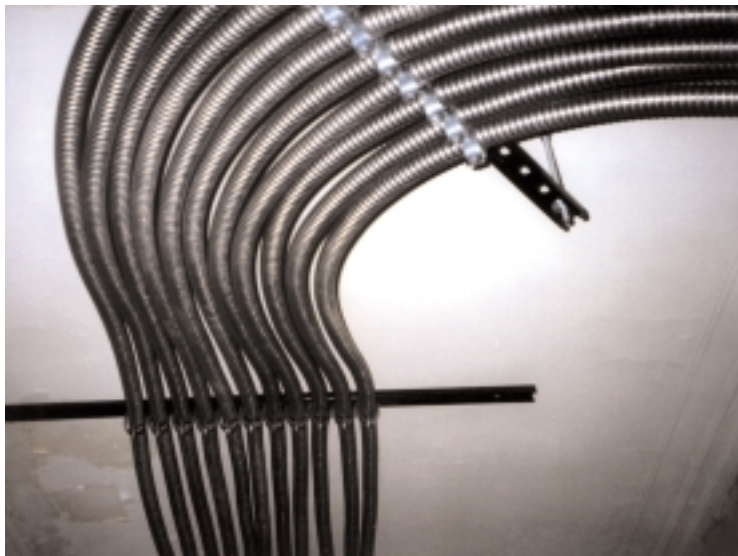
Kingsdell L. P. bought the landmark, along with a 38-unit vacant apartment building called the Chester, and a parking garage, in 1994. Their plans included 208, one

and two-bedroom, upscale apartments in the Chase and Chester; adding a five screen ground-level movie theatre, restaurants, a convention center on its lower level, and a top-story banquet room. The partnership has been quoted as saying they will spend more than \$60 million on the facilities, renamed the Chase-Park Plaza. (*St. Louis Post-Dispatch*, Nov. 5, 1997).

In December 1997, Bell Electrical began wiring the apartments, which consisted of 23 rooms per floor. Chase is 11 stories high.

“We have used flexible MC cable for years,” said Pavelec.

“In projects similar to this, we have installed MC cable in the apartments, but used conduit with the conductors pulled through as the feeder cable”.



Rigid pipe would have to be cut and installed at right angles, whereas metal-clad cable can follow the directions of the halls.

“In this project, with the length of the runs and the number of bends, measuring, cutting and installing rigid conduit would have taken too long and cost too much, so we used MC-Lite® throughout” said Pavelec. “In addition, because of the plaster ceilings, we

would have had to install junction boxes in each apartment.”

Pavelec’s team installed 200,000 feet of MC-Lite® metal-clad cable 12/2 and 12/3 for the branch circuit wiring, and 40,000 feet of 2/0-3 with ground for the feeders. Total cost for wiring the apartments was \$3 million.

“Using MC-Lite and the aluminum conductor feeders saved in labor costs, which equaled cost and time savings for us,” said Pavelec.

“From now on, I would be inclined to use this MC cable in similar applications,

because it was a viable solution here,” said Pavelec. “I’m very pleased with the delivery of the product and with the time and cost savings in installation.”

“MC cable was a viable solution here.”

MC-Lite Product Spotlight

- Lightweight aluminum armor
- For branch, feeder and service circuits in commercial, industrial, multi-residential buildings, and places of assembly
- Available with solid or stranded conductors
- UL rated for cable tray and environmental air handling spaces
- 1, 2, and 3-hour through-penetration Fire Wall rated
- Sizes from 14 AWG to 250 Kcmil

IMPORTANT!

NEC 2002 - Article Number Changes For Type MC & Type AC Cables

	NEC 1999	NEC 2002
Type MC	334	330
Type AC	333	320

For these and other code change updates, visit us on the web at:

www.afcweb.com

tyco / Flow Control / **AFC Cable Systems**